

# Pumps for acids and dangerous liquids



# GemmeCotti Group



# New headquarters



Via Po 23-25-27  
Cesate (MI) - ITALY



# GemmeCotti team

**ENRICO**  
CEO



**RAFFAELLA**  
DEPUTY CEO



**CRISTINA**  
GENERAL  
MANAGER



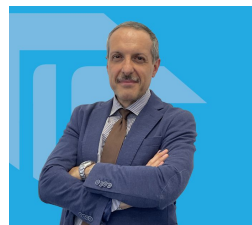
**MARCO**  
EXPORT SALES  
MANAGER



**LAURA**  
SALES  
MANAGER



**MARCO**  
AREA MANAGER  
ITALIA



**MARTA**  
SALES  
ENGINEER



**FRANCESCO**  
PURCHASING  
MANAGER



**ELENA**  
SALES  
DEPARTMENT



**ALESSIA**  
MARKETING  
MANAGER



**FEDERICA**  
LOGISTICS & ACCOUNT  
DEPARTMENT



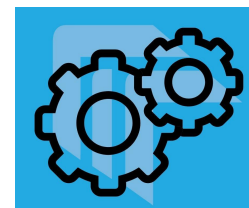
**MARTA**  
PROJECT  
MANAGER



**ALESSIO**  
TECHNICAL  
DEPARTMENT



**MANUFACTURING  
DEPARTMENT**





# Our strengths

**PUMP MATERIALS SUITABLE  
for CHEMICALS and  
CORROSIVE LIQUIDS**



**100% MADE IN ITALY  
SINCE 1992**



**HIGH QUALIFIED STAFF**



**FAST RESPONSE BY EMAIL**

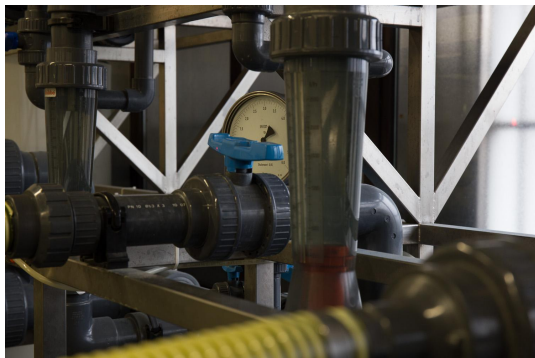


# Our strengths

## PUMPS CUSTOMIZATION



## 100 % PUMPS TESTED



## LARGE INVENTORY of PUMPS and SPARE PARTS



## SHORT DELIVERY TIME



# Main applications



**CHEMICAL INDUSTRIES**



**PHARMACEUTICAL INDUSTRIES**



**GALVANIC ELECTROPLATING**



**AQUARIUMS & MARINE PARKS**



**PRODUCTION OF DETERGENTS**



**WATER TREATMENTS**



**AIR TREATMENTS**



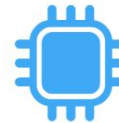
**BOTTLING COMPANIES  
(BEVERAGES, COSMETICS ETC.)**



**OIL & GAS**



**TEXTILE INDUSTRIES**



**PCB INDUSTRIES - PRINTED CIRCUIT  
BOARDS PRODUCTION**



**FOOD INDUSTRIES**

# GemmeCotti network



**70% export**  
**30% Italy**

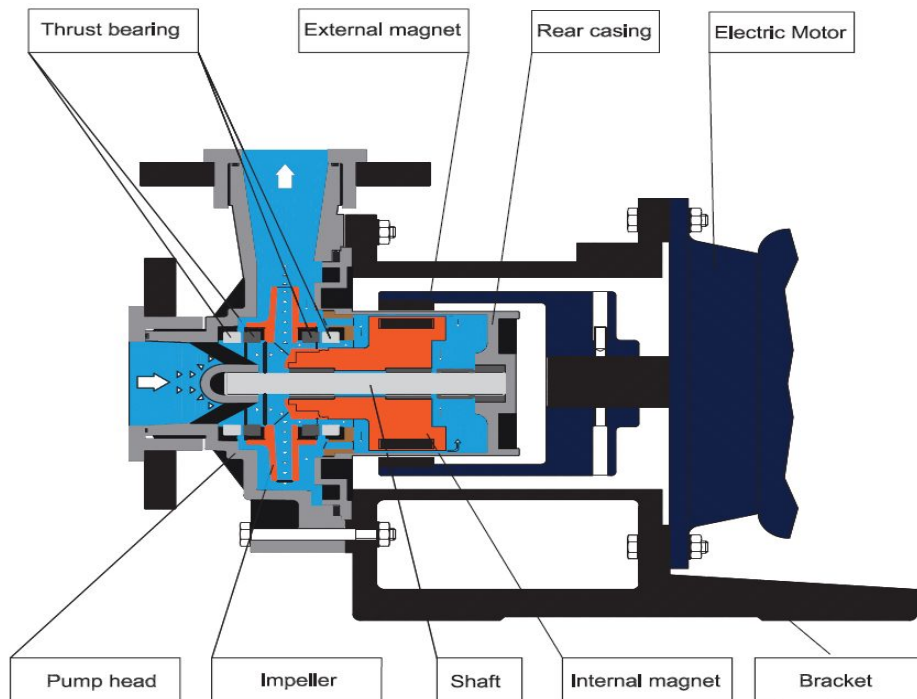


# Quality Management System ISO 9001

- “Quality” is a key word for GemmeCotti, this is why we have been an **ISO 9001** certified company since 2007.
- Our Quality Management System has been updated to the new ISO 9001:2015. This is a clear proof of our dedication to constant improvement and desire to offer high quality service and products.



# Magnetic pump design



- **No leakage** of chemicals or fugitive emissions
- **No mechanical seal**
- **No need for pump/motor alignment**
- **High reliability and safety**
- **Low maintenance costs**
- **Perfect solution for clean liquids**
- **High torque magnetic coupling**

### CENTRIFUGAL PUMPS

Q max=130 m<sup>3</sup>/h  
H max=48 mlc

HTM PP/PVDF



HTM-SP



HCM



HTM SS316



### TURBINE PUMPS

Q max=9 m<sup>3</sup>/h  
H max=50 mlc

HTT



HTT-SP



HTA



HPP/HPF



HTP



### ROTARY VANE PUMPS

Q max=2100 l/h  
H max=13 bar

# GemmeCotti Pumps

HCO



## MECHANICAL SEAL PUMPS

Q max=130 m<sup>3</sup>/h  
H max=48 mlc

HV



HVL



HTM-V



## VERTICAL PUMPS

Q max=130 m<sup>3</sup>/h  
H max=48 mlc

Column length: up to 2 meters

HAOD



## AIR-OPERATED DOUBLE DIAPHRAGM PUMPS

Q max=310 l/min / H max=80 mlc



- zone 1 II 2G c Tx
- zone 2 II 3G c Tx

EM-C



EM-T



EM-P



- zone 2 II 3G c Tx

### EM-C PP/PVDF



### EM-T PP/PVDF



### EM-P PP/PVDF



### EM-T SP



### EM-CO



### EM-C 31 SP



# Other GemmeCotti Pumps

## Centrifugal vertical cantilever pumps mod. PVA



- **Materials available:** AISI 316 or Titanium;
- **Max flow:** 24 m<sup>3</sup>/h, **Max head:** 26 mlc;
- Fume labyrinth seal;
- Impeller with **low axial thrust**;

## H-IBC



- **Materials available:** PP and PVDF;
- **Max flow:** 13 m<sup>3</sup> /h;
- **Max head:** 14 mlc;
- **Standard motor:** 0,55 kw, B3/B5, 2 poli, monophase, 230V, 50-60HZ

# Accessories

## DRY RUNNING PROTECTION DEVICE



## BASEPLATES



## FLANGES

