



## TEST REPORT

Applicant : Kumho Petrochemical  
Address : #45-25, Seongam-dong, Nam-gu,  
Ulsan, 680-140 Korea

Page: 1 of 4

Report No. RT09R-U1044-005-E

Date: Jun. 01, 2009

---

Sample Description : The following submitted sample(s) said to be:-

Name/Type of Product : PPG 3000D  
Name of Material : PPG  
Sample ID No. : RT09R-U1044-005  
Manufacturer/Vender : Kumho Petrochemical

Sample received : May 27, 2009  
Testing Date : May 27, 2009 ~ Jun. 01, 2009  
Testing Laboratory : Intertek Testing Center  
Testing Environment : Temperature : ( 24 ± 2 ) °C, Humidity : ( 60 ± 5 ) % R.H.

Test Method(s) : Please see the following page(s).  
Test Result(s) : Please see the following page(s).

\* Note 1 : The test results presented in this report relate only to the object tested.

\* Note 2 : This report shall not be reproduced except in full without the written approval of the testing laboratory.

Approved by,

E.Y.Lee / Lab. Technical Manager

Authorized by,

H.W.Yoo / Lab. General Manager

This Test Report is issued by the Company subject to its Terms and Conditions of Business printed overleaf. Attention is drawn to the limitations of liability, indemnification and jurisdictional issues defined therein. This Test Report shall not be reproduced, except in full, without prior written consent of the Company.

Intertek Testing Center



# TEST REPORT

Page: 2 of 4  
Date: Jun. 01, 2009

Report No. RT09R-U1044-005-E

Sample ID No. : RT09R-U1044-005

Sample Description : PPG 3000D

Test Items	Unit	Test Method	MDL	Results
Cadmium (Cd)	mg/kg	With reference to IEC 62321 Edition 1.0:2008, by acid digestion and determined by ICP-OES	0.5	N.D.
Lead (Pb)	mg/kg		5	N.D.
Mercury (Hg)	mg/kg		2	N.D.
Hexavalent Chromium (Cr <sup>6+</sup> ) (For non-metal)	mg/kg	With reference to IEC 62321 Edition 1.0:2008, by alkaline digestion and determined by UV-VIS Spectrophotometer	1	N.D.
<b>Polybrominated Biphenyl (PBBs)</b>				
Monobromobiphenyl	mg/kg	With reference to IEC 62321 Edition 1.0:2008, by solvent extraction and determined by GC/MS	5	N.D.
Dibromobiphenyl	mg/kg		5	N.D.
Tribromobiphenyl	mg/kg		5	N.D.
Tetrabromobiphenyl	mg/kg		5	N.D.
Pentabromobiphenyl	mg/kg		5	N.D.
Hexabromobiphenyl	mg/kg		5	N.D.
Heptabromobiphenyl	mg/kg		5	N.D.
Octabromobiphenyl	mg/kg		5	N.D.
Nonabromobiphenyl	mg/kg		5	N.D.
Decabromobiphenyl	mg/kg		5	N.D.
<b>Polybrominated Diphenyl Ether (PBDEs)</b>				
Monobromodiphenyl ether	mg/kg	With reference to IEC 62321 Edition 1.0:2008, by solvent extraction and determined by GC/MS	5	N.D.
Dibromodiphenyl ether	mg/kg		5	N.D.
Tribromodiphenyl ether	mg/kg		5	N.D.
Tetrabromodiphenyl ether	mg/kg		5	N.D.
Pentabromodiphenyl ether	mg/kg		5	N.D.
Hexabromodiphenyl ether	mg/kg		5	N.D.
Heptabromodiphenyl ether	mg/kg		5	N.D.
Octabromodiphenyl ether	mg/kg		5	N.D.
Nonabromodiphenyl ether	mg/kg		5	N.D.
Decabromodiphenyl ether	mg/kg		5	N.D.

Tested by : YK Cho, HJ Kim, WH Park

Notes : mg/kg = ppm = parts per million  
 < = Less than  
 N.D. = Not detected ( <MDL )  
 MDL = Method detection limit

This Test Report is issued by the Company subject to its Terms and Conditions of Business printed overleaf. Attention is drawn to the limitations of liability, indemnification and jurisdictional issues defined therein. This Test Report shall not be reproduced, except in full, without prior written consent of the Company.

Intertek Testing Center

Seoul Office : Tel : 02-2109-1250 Fax : 02-2109-1259 Gumi Office : Tel : 054-462-7647 Fax : 054-462-7657 Web Site : [www.intertek.co.kr](http://www.intertek.co.kr)  
 Seoul Lab. : #709, 7Fl, Ace Techno Tower V, 197-22, Guro-3Dong, Guro-Gu, Seoul 152-766 Korea Tel : 02-2109-1260 Fax : 02-2109-1258  
 Ulsan Lab. : #340-2, Yongam-Ri, Chongryang-Myun, Ulju-Gun, Ulsan 689-865 Korea Tel : 052-257-6754 Fax : 052-276-6792

## TEST REPORT

Report No. RT09R-U1044-005-E

Page: 3 of 4

Date: Jun. 01, 2009

Sample ID No. : RT09R-U1044-005

Sample Description : PPG 3000D

\* View of sample as received;-



This Test Report is issued by the Company subject to its Terms and Conditions of Business printed overleaf. Attention is drawn to the limitations of liability, indemnification and jurisdictional issues defined therein. This Test Report shall not be reproduced, except in full, without prior written consent of the Company.

**Intertek Testing Center**

Seoul Office : Tel : 02-2109-1250 Fax : 02-2109-1259 Gumi Office : Tel : 054-462-7647 Fax : 054-462-7657 Web Site : [www.intertek.co.kr](http://www.intertek.co.kr)

Seoul Lab. : #709, 7Fl, Ace Techno Tower V, 197-22, Guro-3Dong, Guro-Gu, Seoul 152-766 Korea Tel : 02-2109-1260 Fax : 02-2109-1258

Ulsan Lab. : #340-2, Yongam-Ri, Chongryang-Myun, Ulju-Gun, Ulsan 689-865 Korea Tel : 052-257-6754 Fax : 052-276-6792

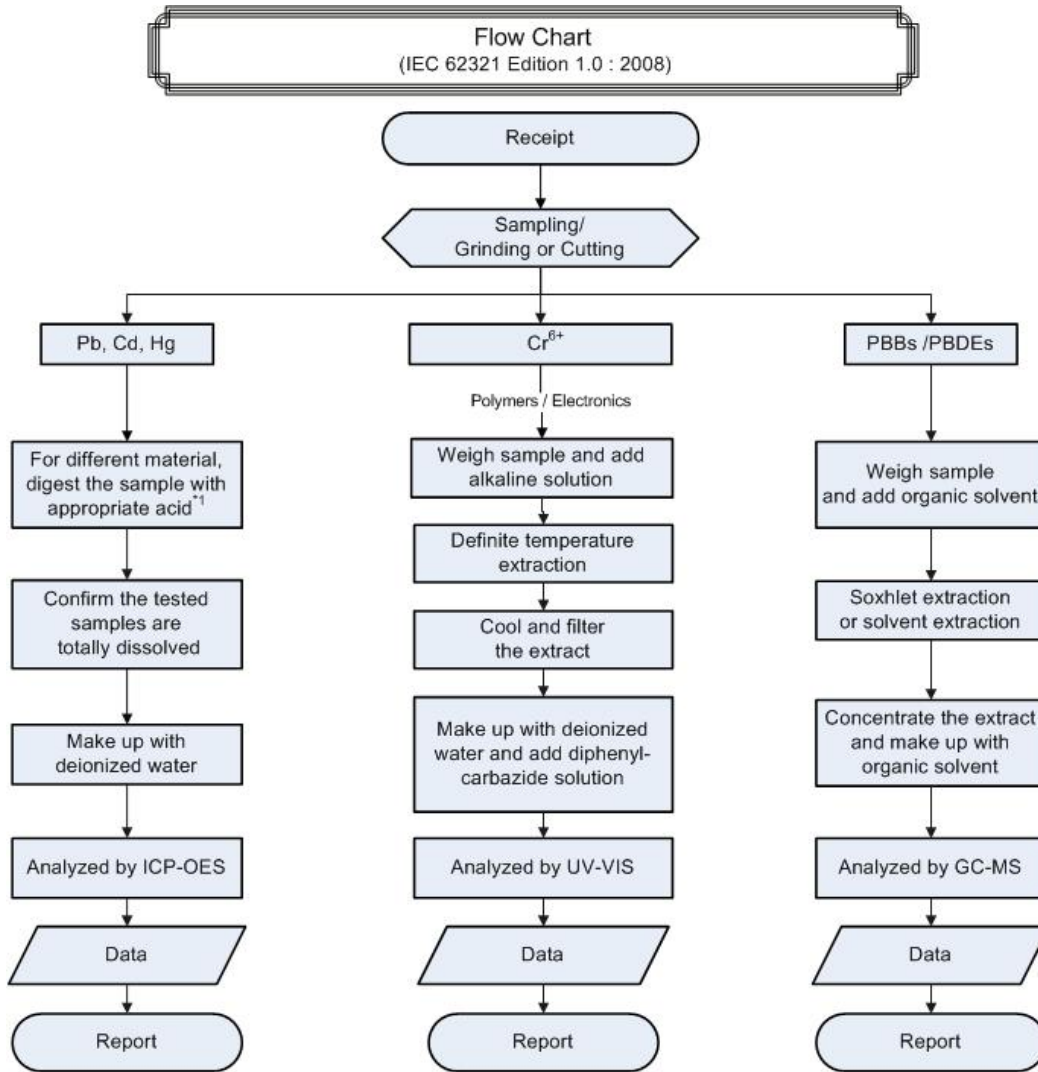
# TEST REPORT

Report No. RT09R-U1044-005-E

Page: 4 of 4  
Date: Jun. 01, 2009

Sample ID No. : RT09R-U1044-005

Sample Description : PPG 3000D



Remarks :

\*1 : List of appropriate acid :

Material	Acid added for digestion
Polymers	HNO <sub>3</sub> , HCl, HF, H <sub>2</sub> O <sub>2</sub> , H <sub>3</sub> BO <sub>3</sub>
Metals	HNO <sub>3</sub> , HCl, HF
Electronics	HNO <sub>3</sub> , HCl, H <sub>2</sub> O <sub>2</sub> , HBF <sub>4</sub>

\*\*\*\*\* End of Report \*\*\*\*\*

This Test Report is issued by the Company subject to its Terms and Conditions of Business printed overleaf. Attention is drawn to the limitations of liability, indemnification and jurisdictional issues defined therein. This Test Report shall not be reproduced, except in full, without prior written consent of the Company.

Intertek Testing Center